



RAIL REPORT

October 2013 • NO. 639



Rocky Mountain Railroad Club • Rocky Mountain Railroad Historical Foundation

The Rocky Mountain Railroad Club 75th Anniversary Banquet Luncheon

October 12, 2013 • Socializing at 11:00 AM, Lunch At 11:30 AM



At The Denver Chophouse & Brewery – Caboose Room
— The Site Of The Original Club Meetings —
1735 19th Street in Downtown Denver

Featuring Guest Speaker: Jim Wrinn, Editor of *Trains* Magazine
Presenting “A Year in the Life of a Trains Editor”

Tickets are \$35 per person.

For questions or last minute reservations through October 6th? Call the Club Treasurer at 303-781-8616. Last minute orders must be prepaid by credit card.

Reservations must be received by October 6th. No refunds on cancellations received after October 6th.

See the insert in the September *Rail Report* for additional details.

RMRRC 2013 Calendar

- | | |
|---------------|--|
| November 12th | Meeting and Program, “GRAND CENTRAL: An American Treasure” presented by Rich Luckin. |
| December 10th | Annual Meeting and Program, “Southeastern Railroads” presented by Nick D’Amato. |

Due to circumstances beyond our control, programs and dates are subject to change without notice. Please contact Pat Mauro at pkmauro@yahoo.com or phone 303-838-7740 with program ideas.



SLRG #18, dressed up to represent SLC RR #1, in celebration of the 100th anniversary of the SLC, is shown at Sugar Junction on its way back to Alamosa on September 1, 2013. – Photo © 2013 by Karl Rethwisch.

In Remembrance
Dr. Al Bartlett

Albert Allen Bartlett (March 21, 1923 to September 7, 2013) was a 60 year member of the club. He joined in 1953 shortly after moving to Colorado to take a job as professor of Physics at the University of Colorado Boulder. At the time of his passing he held seniority number 12. Albert Bartlett presented his famous talk on the effects of constant growth in a world of finite resources called: “Arithmetic, Population, and Energy” over 1,742 times.

He won a cab ride at last year’s banquet and considered it one of the high points of his long life. Members might remember that he rode the recent RTD excursion with his daughter.

75th Anniversary Masthead Photo Notes

To celebrate the 75th Anniversary of the Rocky Mountain Railroad Club, we will be featuring railroad equipment numbered 75 or with 75 in the number. This month features an R. E. Prince photo from the J. L. Ehernberger collection of Union Pacific “Veranda” locomotive at Green River, Wyoming, in 1955.

Notes From The President

By Dave Goss

By now I hope you've had a chance to read the October 2013 *Trains Magazine* article on the Club's 75th anniversary. As you can imagine, it's difficult to cover seventy-five years of our history and attempt to give due credit to all those who have been members or are currently members. The numbers of trips, publications, videos as well as special activities such as acquisition and restoration of historic equipment could each take many pages to adequately describe. Nonetheless, we are very pleased with the coverage *Trains* provided us this year and we thank Jim Wrinn and his editorial staff for working with us to include pictures with the story. While it's difficult to predict the future, it certainly would be nice to read a 100th anniversary article about the Rocky Mountain Railroad Club.

I am very disappointed to report that we only sold 24 tickets for the unique steam excursion on the San Luis & Rio Grande that was to be operated by Number 18, a one hundred year old Consolidation. While the Board was very excited to offer this trip and the railroad made extra effort to provide us this opportunity, unfortunately we had to cancel the trip. The Board of Directors would like your feedback as to why this trip was not of interest. We need to know your thoughts so we can plan for the future. With this type of response, it seems as if the membership no longer has an inter-

est in mainline excursions and we wonder why.

Our annual banquet will be held on Saturday, October 12th at the Denver ChopHouse. Lunch begins at 11:30 AM with a fine buffet prepared by some excellent chefs. We'll have door-prizes, the world premiere of *Journey to Yesteryears - 1938-2013*, a new Club video followed by the highlight of the afternoon, a presentation by Jim Wrinn, Editor of *Trains Magazine* titled "A Year in the Life of a *Trains* Editor." A special gift to each diner is that the Club is subsidizing a portion of the meal so we can keep our prices relatively affordable. Given the ChopHouse's fine reputation, meals are a bit more than what we have spent in the past. But given that the Club first met in this same building when it was the Union Pacific freight house in 1938, this lunch is a trip back in time and place. Tickets can be purchased online at the Club's website or using the insert in the September *Rail Report*.

With the recent flooding, railroading along the Front Range will be changed for the foreseeable future. Get your cameras out and watch for unusual movements.

Please do not hesitate to contact me at dave@dcgoss.com or call me at 303-693-9933.

In Remembrance

Malcolm Robert (Bob) Anderson

Malcolm Robert (Bob) Anderson passed away on July 21, 2013. Bob joined the Club in 1960, was a 53 year member carrying membership card number 34.

A 1953 RMRRC Club Excursion

By Jim Ehernberger

I joined the Rocky Mountain Railroad Club immediately after the UP 3967 Laramie excursion on May 17th, 1953. My first narrow gauge excursion was out of Alamosa on September 26th and returning from Durango on September 27th, 1953. That trip did not go to Silverton.

Looking back, all of my first memories of the Club now date back 60 years. One wonders where all the time went?

The photographs below and on page 9 were taken of this first narrow gauge excursion behind engine 488. Although the name of the railroad has changed, the locomotives and the Chama yard are nearly identical to what it was in 1953.



On August 15, 2013, there were two trains out of Chama on the Cumbres & Toltec line. 488 on the first train and 489 above, both still performing regular duties, the same as it had in 1953.

– Photo © 2013 Jim Ehernberger.



488 taking water at Antonito on September 26, 1953. Everett Rohrer, Club President, is talking with the head brakeman. In those early days the trainmen wore full passenger uniforms from the San Juan days.

– Photo © Jim Ehernberger.

A 1953 RMRR Club Excursion

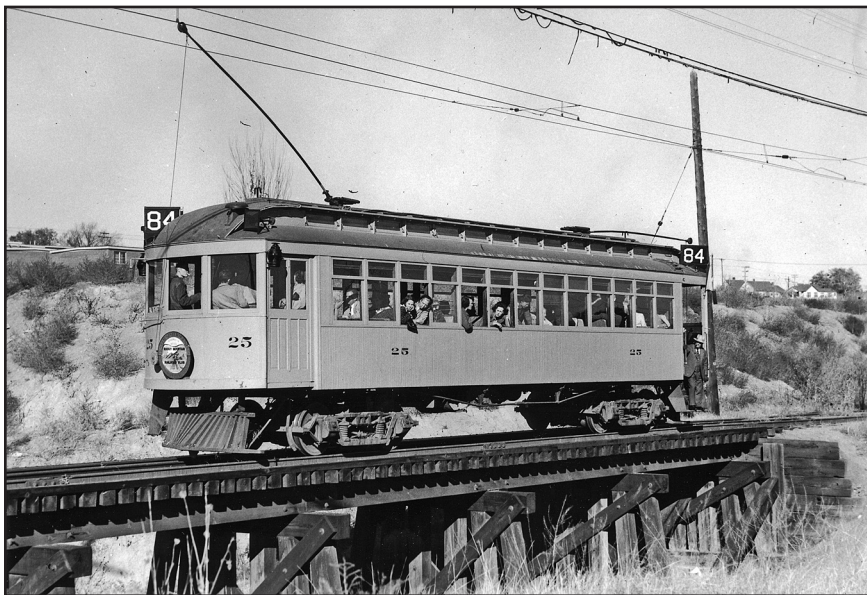


488 taking water at Gato, Colorado on September 26, 1953. I have no idea who the kid belonged to. It was a race getting to the head-end to take a photo during the momentary watering stops along the line. I was 16 then and could out-run most anyone I guess. – Photo © Jim Ehernberger.



488 on train ready to depart Durango on the eastward segment of the excursion on September 27, 1953. – Photo © Jim Ehernberger.

October RMRRC Club Excursions

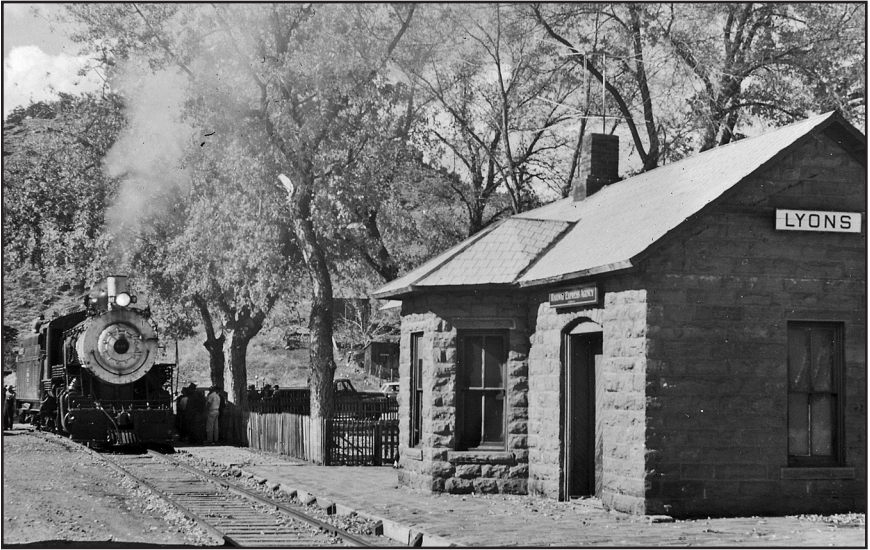


Car #25 has stopped for photos on a Denver to Golden trip on October 28, 1951. In October of 1950, this car was purchased for \$150 by the RMRRC, hence this was a trip on the Club's "own" car. – Bob Andrews photo, Tom Klinger collection.



UP #2888 and UP #812 were the power on train #57 for a Club trip using two chartered cars for the Denver to Cheyenne trip on October 31, 1954. This view of UP #2888 taking water at La Salle was "snapped" by Neal Miller. Numerous club members recorded this scene. – Neal Miller photo, Tom Klinger collection.

October RMRRC Club Excursions



C&S engine #647 is parked at the Lyons, Colorado, depot while RMRRC members have a picnic lunch on October 25, 1959. Regrettably Lyons was recently devastated by a destructive flood. –Neal Miller photo, Tom Klinger collection.

Visit D&RGW Locomotive 169 In Alamosa, Colorado

By Jim Poston

Even though the Club's excursion on the San Luis & Rio Grande out of Alamosa has been cancelled, The Friends of the 169 invite you to visit Alamosa's Cole Park pavilion on the first Saturday of each month for their Volunteer Days:

October 5, 2013
November 2, 2013
December 7, 2013

With enough advance notice The Friends can schedule a visit to see restoration efforts on the 169 if a Club member happens to be in the Alamosa area. See their website at www.friendsof169.com, or contact them at 866-970-3540.



Lee Conner lettering the tender of 169.
– Photo courtesy Friends of the 169.


Current Railroad Happenings



EMDX 1206 and 1208, SD70ACeP-4 (EMD's version of GE's ES44AC-4. Four AC Traction motors in a B1-1B configuration whereas GE's are A1A-A1A). Units underwent individual axle control adhesion test between C&S Junction, Denver and Tabernash, Colorado, on August 26, 2013. Spliced between the EMD SD70ACe units was UPP 210.

The UPP 210 Mobile Laboratory was upgraded by Union Pacific in 2012. It now sports roof top solar panels. The car was built by Pullman in 1928 and operated in Pullman service until 1948. Union Pacific purchased the car in 1948 naming her 'Balsam Fir' a 10-section, one drawing room, one compartment sleeper. UP remodeled the car into dynamometer car 903001 in July 1963. UP changed it to Mobile Laboratory car UP 210 in July 1964. Later renumbered UPP 210 and stored for several years at the Cheyenne, Wyoming, steam shop.

– Photo © 2013 by Chip.



**75
YEARS**
Rocky Mountain
Railroad
Club

75th Anniversary Commemorative Items

The following commemorative items will be available for sale to members this summer at Club meetings and on the Club website:

- Baseball caps with embroidered logo, choice of khaki or black (\$18.00).
- 16 ounce glass mug with logo (\$10.00)
- 75th Anniversary logo patch (\$4.00)
- Enameled logo lapel pin (\$5.00)

Current Railroad Happenings



D&RGW AX-41, Jordan Spreader, was employed to clear flood debris west of Rocky Siding into Coal Creek Canyon on UP's Moffat Tunnel Subdivision. Power on the work train in the rain on September 13, 2013, was UP 4798 & UP 4820, SD70M units. Epic flooding between Colorado Springs north to Wyoming / Colorado state line and west towards Estes Park, Colorado, closed roads and cut off towns. 12.60-inches of rainfall was reported from September 7 to 13, 2013, at Coal Creek. The Highway 72 overpass still displays Rio Grande heritage at west end of Leyden Siding, Arvada, Colorado. – Photo © 2013 by Chip.



This UP work train was eastbound at Grizzly Siding in Glenwood Canyon on September 18, 2013, transporting track repair equipment likely headed to wash-outs east of the Moffat Tunnel. – Photo © 2013 Dave Schaaf.

Current Railroad Happenings



OmniTrax's Great Western Railway had HLCX 336 and 343, GP38-2, pull freight cars from flooded Milliken, Colorado, here on September 16, 2013 east of Johnstown, Colorado. Note barricades on Highway 60 at right to keep drivers out of Milliken. That is where Union Pacific's Fort Collins Branch interchanges with the Great Western Railway. The UP Fort Collins branch was also damaged by South Platte and Big Thompson Rivers. – Photo © 2013 by Chip.



OmniTrax's Great Western Railway suffered flood damage near Johnstown and in Milliken, Colorado. The wood trestle over the Big Thompson River took a beating but most of it held up. The south end suffered erosion damage undermining the track left sagging over the high water. The river had subsided some when this image was taken on September 16, 2013, north of Johnstown, Colorado. Officer Junction would be to the left. This busy short line suffered over a mile of damaged track. Twelve cars were derailed by flooding at Milliken with seven cars on their sides. – Photo © 2013 by Chip.

Current Railroad Happenings



Flood damage to the BNSF in Longmont, Colorado. The BNSF crews are close to finishing their work on the main line thru Longmont, but the Lyons branch will require a lot more repair. – Two photos © 2013 Jerry Day

Current Railroad Happenings



BNSF 6816 and 6942, new ES44C4 units, moved an 8-car passenger special from Cheyenne, Wyoming, to Fort Collins, Colorado, on August 23, 2013. The train O CHEFCL1 23a had; Glacier View-30 full length dome with rear facing theatre seats, Mountain View-28 bar lounge, Lake Superior-10 diner, Topeka-6, Red River-3 business car, Missouri River-4 business car, Marias Pass-64 and Snoqualmie Pass-51 head-end power car. – Photo © 2013 by Chip.

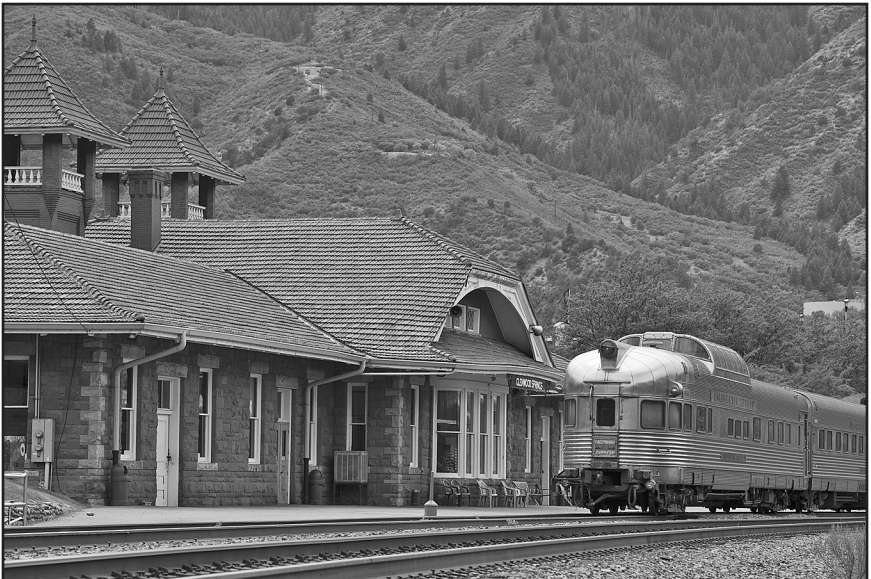


Owner / operator Promontory Chapter, National Railway Historical Society, ran two Salt Lake City, Utah, to Denver round trips (Sept 6 & 7 and 9 & 10) with Moonlight Dome on Amtrak trains 5 & 6, the California Zephyr. The dome car was built by Budd Company in 1948 for the Chesapeake & Ohio Railroad for C&O's new train called "The Chessie" that never operated. The dome was transferred to the Baltimore & Ohio Railroad. The car was on train 6 along the Colorado River in Byers Canyon near Hot Sulphur Springs, Colorado, on September 9, 2013. (Info courtesy Promontory Chapter, NRHS) – Photo © 2013 by Chip.

Current Railroad Happenings



California Zephyr Railcar Charters owned Silver Solarium, Budd built 1948 dome lounge observation, and Silver Rapids, sleeper on Amtrak train 5, the California Zephyr, along BNSF's Brush Subdivision, Tonville Siding, Lochbuie, Colorado, on August 19, 2013. The two rear cars came off at Denver for a short stay.
– Photo © 2013 by Chip.



Silver Solarium and Silver Rapids (sleeper) rolled west on Amtrak train 5, the California Zephyr, bound for Emeryville, California, on August 20, 2013. The cars arrived on train 5, August 18, 2013, and laid over at Amtrak's Denver Depot one day. The train was departing the Denver & Rio Grande RR built Glenwood Springs, Colorado, stone depot. – Photo © 2013 by Chip.

Colorado Railroad Museum 2013 Scheduled Special Operation Days

For information call 303-279-4591

<http://www.coloradorailroadmuseum.org/event-listings>

Trick or Treat Train October 26, 27

Catch a ride behind the historic locomotive in vintage passenger cars hosted by conductors and engineers in full costume. The Trick or Treat Train departs every 30 minutes between 10:00 AM and 4:00 PM.

Visit all the Town's special stops to fill your treat bags and tickle your funny bones. Try a visit to our "not so spooky" Haunted Railcar or the Olde Railroaders silly graveyard. And, capture a photo of your costume as you visit our Pumpkin Patch.

Open Car Saturday November 16

Santa Claus Special
December 7, 14, 15, 21

Colorado Rails & Cocktails An Evening Of Colorado History

October 18, Friday, 6:00 to 8:00 PM
Hiram Wheeler

December 6, Friday, 6:00 to 8:00 PM
The American Hobo

Ride The Rails Saturday

Train rides every Saturday. Catch a ride behind one of the Museum's steam or diesel locomotives in passenger cars from different eras in Colorado railroad history or on the uniquely Colorado Galloping Goose. Rides operate 10:00 AM to 4:00 PM.

Rocky Mountain Railroad Club Members in good standing, and upon presentation of a current membership card, are entitled to free admission. Members are invited to join the Colorado Railroad Museum (a Museum membership provides certain merchandise discounts), and members may participate in restoration or other maintenance programs as volunteers. Please contact the volunteer coordinator at the CRRM.

Intermountain Chapter, NRHS

2013 Event Schedule

For information call 303-298-0377

<http://www.cozx.com/nrhs>

Friday, October 18, 2013
Dinner Meeting and Program at IHOP

We're delighted to have retired journalist and book author Dick Kreck return for a visit. Dick will talk about his latest book, *Hell on Wheels — Wicked Towns Along the Union Pacific RR*. His presentation will include a PowerPoint presentation of photos from his book. Should be fun and entertaining.

Dick retired from The Denver Post after 38 years as an editor and columnist. He is the author of five other books, including the best sellers *Murder at the Brown Palace: A True Story of Seduction and Betrayal*, as well as *Smaldone: The Untold Story of an American Crime Family*. He's also well known for his involvement with the Denver Post Cheyenne Frontier Days train.

Dinner Meeting Notes:

We conduct our dinner meetings at the IHOP at 5280 Wadsworth Bypass in Arvada. Go to 53rd and turn east, you will be there. Lots of parking and well lit. We have the back meeting room from 5:30 to 8:30 PM. The food is good and priced right. The menu is varied from breakfast, lunch, and dinner items available all day. IHOP management has been informed to expect 20-25+ people, so please plan to attend the program and support the Chapter. When you arrive tell the IHOP personnel you're with the railroad club.

No minimum dollar amount of food to purchase is required to attend, but please order something. The gratuity will NOT be pre-added to your dinner check. You'll calculate your own. Dinner orders begin at 5:30 and the program begins at 7:00 PM. So, please arrive accordingly to be served in time to enjoy both your meal and the program.

Publishers Statement — Rocky Mountain Rail Report

The Rocky Mountain Rail Report (ISSN 1040-9223) is published by the Rocky Mountain Railroad Club and the Rocky Mountain Railroad Historical Foundation.

First class postage paid at Denver, Colorado.

Postmaster, send address changes to:

Rocky Mountain Rail Report, PO Box 2391, Denver, CO 80201-2391

Club Information

Rocky Mountain Railroad Club
PO Box 2391
Denver, CO 80201-2391
Web: <http://www.rockymtnrrclub.org>

Club and Foundation Officers

President	Dave Goss
Vice President	Pat Mauro
Secretary	Roger Sherman
Treasurer	Keith Jensen

Club and Foundation Directors

John Charles, Nathan Holmes, Andy Dell, Dan Edwards,
Mike Tinetti, Nathan Zachman, Dave Schaaf, Don Hulse.

Membership Information

Membership in the Rocky Mountain Railroad Club may be obtained by sending the annual dues to the Club address listed above.

Regular membership dues are \$35.00. Overseas regular membership dues are \$45.00.

Contributing membership is \$50.00. Sustaining membership is \$70.00.

Patron membership is \$100.00. Golden membership is \$500.00.

An associate membership for spouses and children is \$25.00 additional.

Members joining after April may send a payment of \$3.00 for each month remaining in the year.

Members of the Rocky Mountain Railroad Club are also members in the Rocky Mountain Railroad Historical Foundation, the non-profit arm of the Rocky Mountain Railroad Club.

Board Meetings

Members are always welcome to attend any board of directors meeting. Please contact any Club officer for the date, time and location.

Newsletter Contributions

Newsletter contributions and items for publication should be sent to:

Bruce Nall, Editor
Rocky Mountain Rail Report
PO Box 620579
Littleton, CO 80162-0579

E-mail: selectimag@aol.com

Items for the November 2013 Rail Report should be sent by October 19th.



BOX 2391
DENVER, COLORADO 80201

